

09 APRIL 2023

EASTER SUNDAY OF THE RESURRECTION OF THE LORD

† Saint Lawrence Church

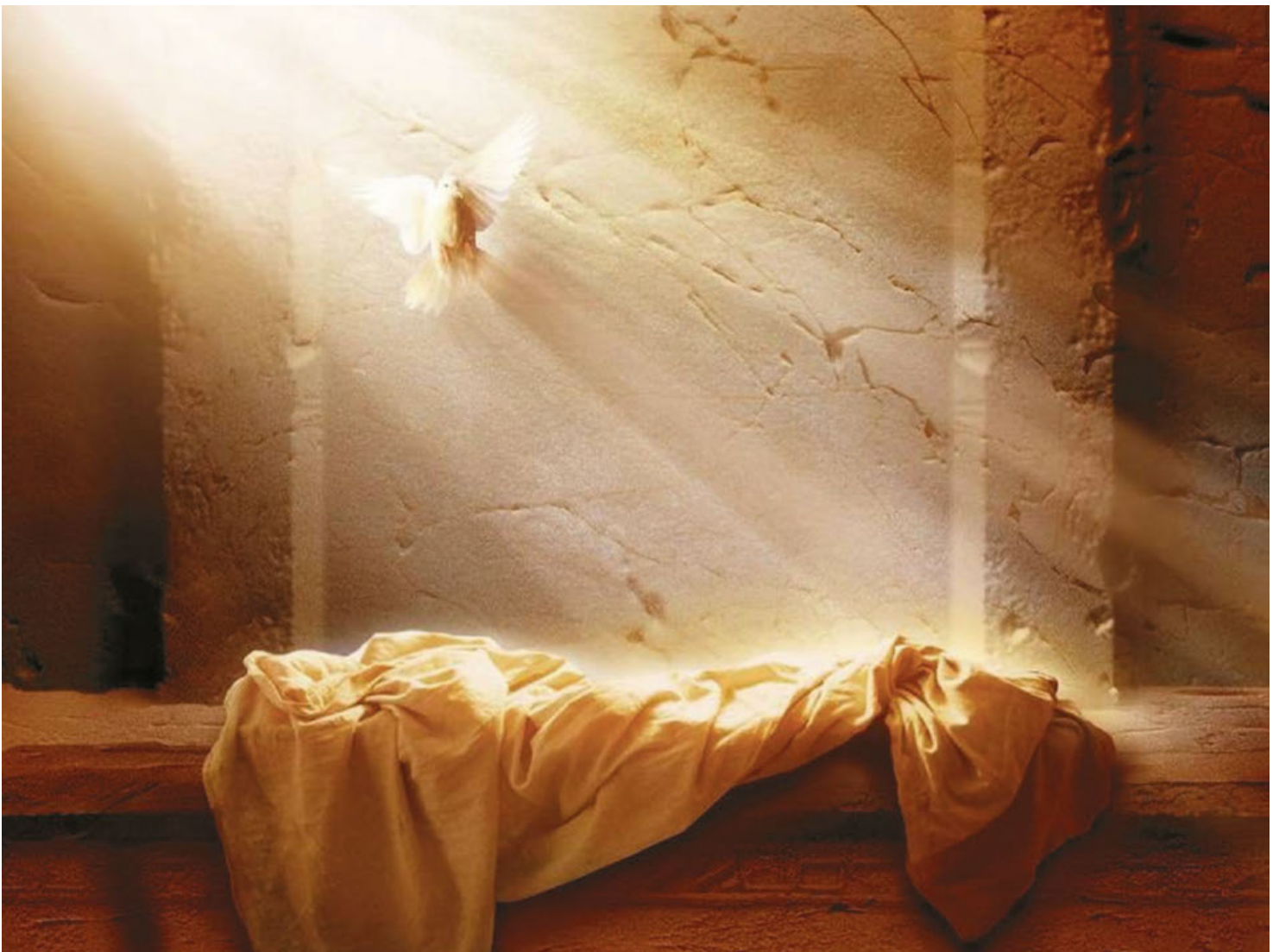
1000 North Greece Road

Rochester, NY 14626

585-723-1350

www.stlawrencegreeceky.org • www.stlawrenceschool.org

CHRISTUS RESURREXIT!





*This week, we light the
Sanctuary Lamp in Memory of*

Eckel, Gross & Wohlers

Families

By Rita

THIS WEEK'S PRAYER

Monday, April 10

Monday within the Octave of Easter

8:30 a.m. Mass for George A. Blais by Family

Tuesday, April 11

Tuesday within the Octave of Easter

8:30 a.m. Mass for Baby Joseph by Mrs. Jessy John

Wednesday, April 12

Wednesday within the Octave of Easter

8:30 a.m. Mass for Mr. & Mrs. A. Erickson by Son & Daughter-in-law

Thursday, April 13

Thursday within the Octave of Easter

8:30 a.m. Communion Service, prayer for Priestly Vocations

Friday, April 14

Friday within the Octave of Easter

8:30 a.m. Mass for Josephine Calabrese by Calabrese Family

Saturday, April 15

Saturday within the Octave of Easter

4:00 p.m. Mass for David Vaccaro by Vi Penman

Sunday, April 16

Sunday Of Divine Mercy

8:00 a.m. Mass for Joe Palermo Happy Wedding Anniversary by Your loving wife, Mary

10:00 a.m. Mass for St. Lawrence Parishioners by Father Chase

Readings for the week of April 10, 2023

Monday, April 10:	Acts 2:14, 22-33/Mt 28:8-15
Tuesday, April 11:	Acts 2:36-41/Jn 20:11-18
Wednesday, April 12:	Acts 3:1-10/Lk 24:13-35
Thursday, April 13:	Acts 3:11-26/Lk 24:35-48
Friday, April 14:	Acts 4:1-12/Jn 21:1-14
Saturday, April 15:	Acts 4:13-21/Mk 16:9-15
Sunday, April 16:	Acts 2:42-47/1 Pt 1:3-9/Jn 20:19-31

Attendance March 25 & 26, 2023
Total-867

March 25 & 26, 2023 Collection

	Amount Received	Weekly Budget	Surplus (Shortfall)
Sunday Collection	\$11,040.34	\$13,750.00	\$(2,709.66)
General Maintenance	\$813.00	\$807.00	\$6.00
School Support	\$460.00	\$403.00	\$57.00

Mass Schedule

Saturday 4:00 pm
Sunday 8:00 am
10:00 am

Mon - Wed, Fri 8:30 am
Thu Communion Service 8:30 am.

Holy Days of Obligation
Please see bulletin.

Confessions

Saturday 3:00 pm

Anointing of the Sick

Please call us if you or a family member wish to be anointed.

Baptism

Parents should contact the Parish Office at the rectory as soon as they know they are expecting.

Marriage

Engaged couples should contact us at least **one year** in advance of their desired date.

Office Hours

Monday - Friday
9 a.m. - Noon, 1 pm - 4 pm
Phone: 723-1350 fax: 723-1361

St. Lawrence School

585-225-3870

Internet and Social Media

Email - rstlawre@dor.org
website - stlawrencegreece.org
Facebook - www.fb.me/STLGreece



Parish Staff

Rectory Office 723-1350

The Very Rev. Lee P. Chase, V.F., S.T.L.
Dean, Monroe West Deanery for the Diocese of Rochester, Pastor, x 207
Frank Arvizzigno
School Principal, 225-3870

Finance Administration

Marisa Stieve
Regional Finance Director, x.206
Dawn Nudo
Regional Business Manager, x 205
Cameron Hyzy
Regional Bookkeeper, x203

Pastoral Ministry

Deacon David Squilla
Pastoral Associate, x. 212
Deacon Manny Asis
Senior Deacon, x. 201

Administrative Staff

Wendy Speciale
Business Manager, x. 201

Steven Geraci

Maintenance Supervisor, x 201

Jim Grotke

Maintenance, x. 201

Faith Formation Ministry

Amanuel Malik
Regional Faith Formation Director
(585) 663-2244, x106
Debbie Cichelli
Regional Faith Formation Assistant, 225-7320
Donna Gray
Regional Youth Ministry/CYO, 225-1485

Music Ministry

M. Virginia Pierce
Music Director, 227-7236
Susan Judkins
Song Prayers, 797-3719
Steve Amico
Faithful Voices, 225-7338

WHAT'S NOW

This Week At St. Lawrence Church

Monday, April 10

Tuesday, April 11

Faithful Voices - Church

7:00p.m.

Wednesday, April 12

Song Prayers - Church

7:15p.m.

Thursday, April 13

Greece Ecumenical Food Shelf - Deacon Hall

9:30a.m.

School Dance Set Up - Deacon Hall

4:00p.m.

Friday, April 14

School Dance - Deacon Hall

6:30p.m. - 9:00p.m.

Saturday, April 15

Faith Formation - Deacon Hall

10:30a.m. - 2:30p.m.

First Penance - Church

1:30p.m. - 3:00p.m.

Sunday, April 16

CRS RICE BOWL

Easter Sunday

Our CRS Rice Bowl journey has ended, but our prayers, fasting and almsgiving continue as we seek a closer relationship with God and our global family. Let us hold in our hearts our sisters and brothers in Honduras, the Philippines and Kenya and commit to share our Easter joy with people in our local community and around the world.

Please remember to return your Rice Bowl contributions. There are collection boxes at the Church entrances. God bless you for your generosity.

Have You Pre-Planned Yet?

There is no time like the present to gather information



BENEFITS OF PRE-PLANNING

- Continues your faith through your legacy
- Provides your family peace of mind
- Ensures your wishes are met
- Eliminates doubt for your family
- Eases financial hardship for loved ones
- Knowledgeable Family Service Counselors make the process easy
- Offering interest free payments

Join us on Tuesday, May 9th at 1:00 PM in Deacon Hall at St. Lawrence Church, 1000 North Greece Rd.

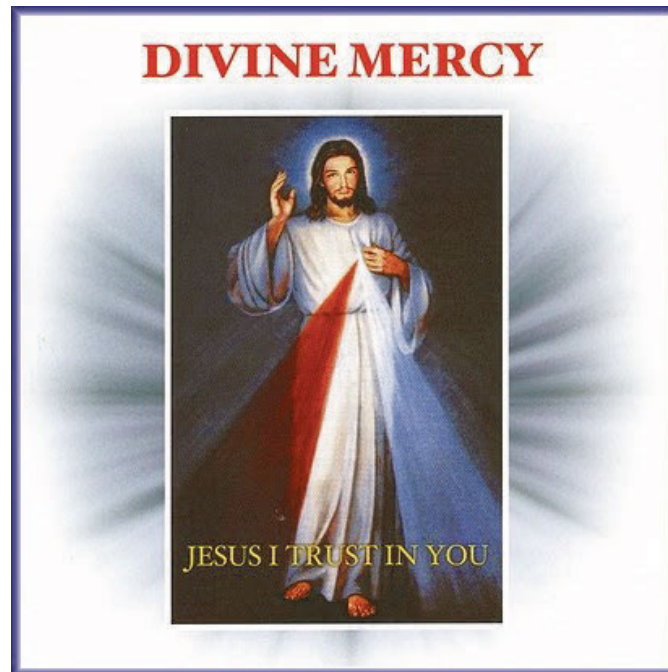
There will be Funeral Directors present from nearby Funeral Homes.

If interested please RSVP by Tuesday, May 2nd

by contacting **Cristyn Simone** at Holy Sepulchre Cemetery – 585-458-4110 or 585-697-1122

or cristyn@holysepulchre.org

Happy Easter from the Pastoral Planning Task Force! We continue to work together to prepare for the future of our parishes (Holy Cross, Our Mother of Sorrows, St. Charles Borromeo, St. John the Evangelist, St. Leo the Great and St. Mark). We recognize the challenges that face our parishes but trust in the faithful God who guides our communities and promises new, risen life. Please keep our 7 parishes in your prayers. Information about planning is included in bulletins and available at <https://holycrossrochester.org/index.php/taskforce>.



Divine Mercy Holy Hour - Sunday April 16 @ 2:30 p.m.

Exposition of the Blessed Sacrament, Scripture, Homily,
and
Divine Mercy Chaplet, closing with Benediction.

"I will not allow myself to be so absorbed in the whirlwind of work as to forget about God. I will spend all my free moments at the feet of the Master hidden in the Blessed Sacrament." (Diary 82, page 42)

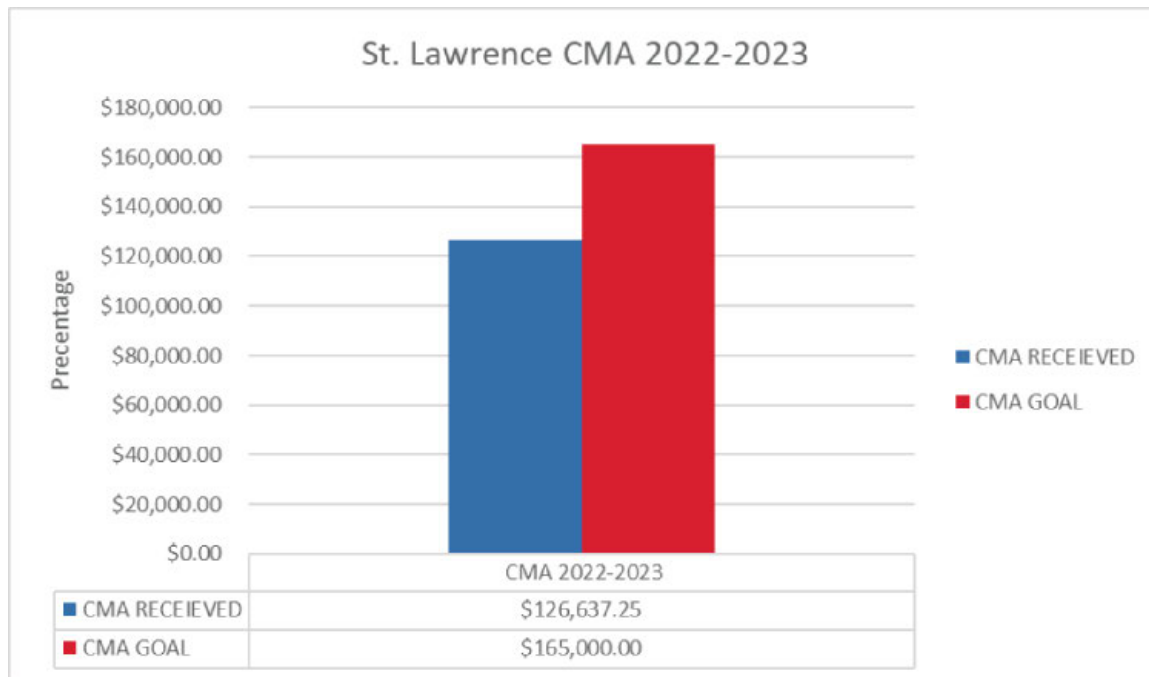
WHERE: St. Mark's Church, 54 Kuhn Rd, Greece

Please help use reach our Parish CMA Goal this year!

St. Lawrence needs your help! Each parish is tasked with raising a specific amount for the CMA. St. Lawrence must raise \$165,000 for this year's campaign. As of March 27th, we have raised \$126,637.25, which is 78% of our required goal. St. Lawrence must raise an additional \$38,362 by May 31, 2023. The last few years our parish has not met our required goal. Unfortunately, this means the remainder of the funds come from our reserves to fill that gap. I am asking our parishioners to please donate what they can, every dollar helps. If our parish doesn't raise all the funds the balance will come from our reserves again. This puts off necessary projects and repairs needed by our parish. Thank you for your continued financial support. Our parish is grateful for our parishioner's continued generosity.

Annual Catholic Ministries Appeal campaign funds wide range of ministries

Contributions to the CMA fund more than half the diocesan budget, fully or partly supporting efforts parishes could not easily afford on their own. Among CMA-supported initiatives are: faith-formation programs for children and adults; young-adult ministries; Catholic schools; sacramental preparation; youth and campus ministries; diocesan Catholic Charities and its regional offices and agencies; information technology; chaplaincies; social-ministry efforts; support of deacons, pastoral leaders and vocations, including formation and education through St. Bernard's School of Theology and Ministry; parish support ministries; operations and services of the diocesan Pastoral Center; and ministries of the Vatican, the U.S. bishops and Bishop Matano.



If you have any questions regarding how to donate or about the CMA please reach out to Marisa Stieve, Director of Finance at 585-723-1350 or marisa.stieve@dor.org.

RICHARD J. BORRELLI

Associate Real Estate Broker

REALTOR®

St. Lawrence

Parishioner

rjborrelli@aol.com

www.rickborrelli.com

585-600-7425

WCI
Realty

2450 West Ridge Rd,
Suite 308 Rochester, NY 14626



SUPPORT OUR
ADVERTISERS!

GATTI
PLUMBING

Complete
Residential & Commercial
Plumbing Services

441 Elmgrove Road,
Rochester, NY 14606

426.5068

www.gattiplumbing.com

Rochester Mower

SALES • SERVICE • PARTS

Repairs on all Makes
& Models of Lawn Mowers

10 Point Maintenance \$90.00 (Plus Parts)

Pick Up & Delivery Available

585-392-9010

1303 Manitou Rd., Hilton, NY

MR. FIX-IT

- Roofs • Roof Leaks
- Rotted Wood Repairs
- Chimney Repairs/Rebuilds
- Home Repairs • Insulation



FULLY INSURED



& LICENSED



585-266-ROOF
(7663)

10% SENIOR DISCOUNT

FINANCING AVAILABLE
18 MONTHS SAME AS CASH



Madison Place
A 55+ Community

NOW LEASING

*Brand New Luxury
Apartment Homes
Come home to where
the living is easy*

*For more information
please contact Elena*

(585) 392-2177

www.madisonplacecommunity.com

Community Wishbook

Rochester's Charity Giving Guide

*"Your donations can
make wishes come true"*

If you have items or time to
donate to a local charity,
please visit

www.communitywishbook.org

Small Job Specialist

**I'VE GOT A
TOOL FOR THAT**

Fix or Repair, Build, Assemble & Install

Alan Redfern

Parishioner

CELL (585) 752-0978



WE'RE HIRING!
AD SALES EXECUTIVES



BE YOURSELF.
BRING YOUR PASSION.
WORK WITH PURPOSE.

- Paid training
- Some travel
- Work-life balance
- Full-Time with benefits
- Serve your community

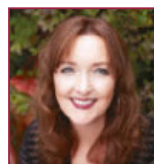


Contact us at
careers@4lpi.com or
www.4lpi.com/careers

**Happier
at Home**
In-Home Care



Marie
President/CEO



Donna
Business Support Manager

(585) 633-2060

www.happierathome/westrochester.com

Seek **Truth**,
Find Wisdom.

WE APPRECIATE OUR
ADVERTISERS!

They allow us to print
this bulletin. Thank you!



Bellasera Place
...A Tra-Mac Community

Custom Built Single Family Homes
Conveniently Located off 519 Mill Rd.

**Building
Greece
for Over
40 Years**

(585) 392-5200

www.TRA-MAC.com



For ad info. call 1-800-477-4574 • www.4lpi.com

St. Lawrence, Rochester, NY

06-0101

Penury City
The Adventure awaits you...



Thomas Nastek
www.PenuryCity.com

**Enhanced Assisted
Living and Memory
Care with a *whole
lotta heart.***

THE VILLAGE

AT MILL LANDING

45 MILL Road • Rochester

585.720.3033

TheVillageAtMillLanding.com



FREE
AD DESIGN
with purchase
of this space

CALL 800-477-4574

LET'S GROW YOUR BUSINESS

Place Your Ad Here and Support
Our Parish!

CONTACT ME Brett Burt

bburt@4LPi.com • (800) 477-4574 x6443



GENE WELCH

ATTORNEY / PARISHIONER

CALL TODAY: (585) 899-1458

400 LINDEN OAKS SUITE 110
ROCHESTER, NY

Attorney Advertising: Prior results do not guarantee a similar outcome.

**SUPPORT OUR
ADVERTISERS!**

A&J Tax, Inc.



**Accounting, Payroll,
& Tax Services**

Joseph M. Hendrix

1225 Long Pond Road
Rochester, NY

585-227-4626

**Business • Personal
Estates & Trusts
Out of State Returns**

joe@ajtaxinc.com

www.ajtaxinc.com

**WE APPRECIATE OUR
ADVERTISERS!**

They allow us to print
this bulletin. Thank you!



Serving Greece
Residents
for over 60 years!

858 Manitou Rd, Hilton, NY

Phone: **585-392-3222**

Fax: **585-392-2126**

www.nysfence.com

**SUPPORT
OUR PARISH**

Local business ads
sponsor the printing of
our bulletin.
4lpi.com/adcreator

**Place Your Ad Here and
Support our Parish!**

Instantly create and purchase
an ad with

**AD
CREATOR
STUDIO**



4lpi.com/adcreator

*Reliable, Local,
Family Owned & Operated*
Kitchen, Bathroom, Basement Remodeling,
Flooring, Windows, Tile, Carpentry,
Plumbing, Electrical & more

NO JOB TOO BIG OR SMALL - FREE ESTIMATES

(585) 303-6979



rosaremodeling@rochester.rr.com
www.rosaremodeling.com



For ad info. call 1-800-477-4574 • www.4lpi.com

St. Lawrence, Rochester, NY

06-0101